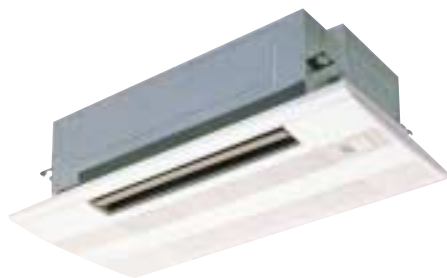


CEILING CASSETTE TYPE  
**1-WAY AIRFLOW**  
**PMFY-VBM**  
 Compact and  
 lightweight body  
 perfect for limited  
 ceiling space  
 applications.



### Compact size for smooth installation and maintenance

Unit body size has been standardized for all models at 33.62" for easier installation. Body weight is also only 31 lb for the main unit and 6.6 lb for the panel, making this unit one of the lightest in the industry.

### Quiet operation

Newly developed airflow control technology reduces noise level to only 27dB (P20VBM) for industry-leading quiet operation.

### Drain lift-up mechanism

The drain can be positioned anywhere up to 25.98" from the ceiling's surface.

